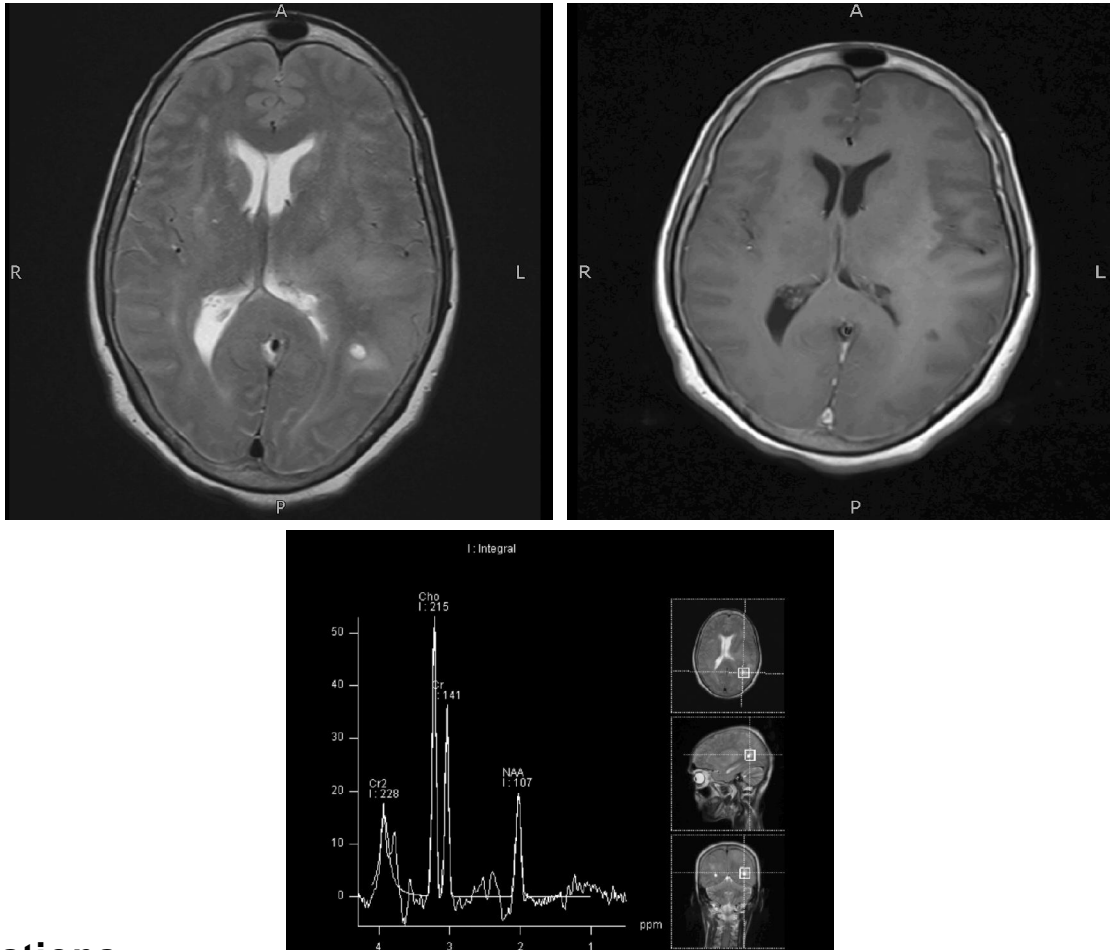


Submitted by: Muhammad Zeeshan

Department of Radiology, Aga Khan University Hospital, Karachi, Pakistan.

PJR October - December 2009; 19(4): 147-148



Questions

- Q.1 What is the abnormality in the MRI and MR spectroscopy?
- Q.2 Is this a localized or a diffuse process?
- Q.3 Is it inflammatory or neoplastic?
- Q.4 What is the diagnosis?

QUIZ 2

Answers

Answer 1: Bilateral diffuse infiltrative abnormal signals on T2-weighted sequences in brain parenchyma both in grey and white matter. No significant post contrast enhancement.

MRS revealed more than quadruplet ratio of choline: creatine suggestive of a neoplastic process.

Answer 2: It is a diffuse process.

Answer 3: Neoplastic.

Answer 4: Gliomastosis cereberi (diffuse cerebral gliomastosis)

References

1. Diagnostic Imaging Brain, Osborn, Part I, section 6, page 26.