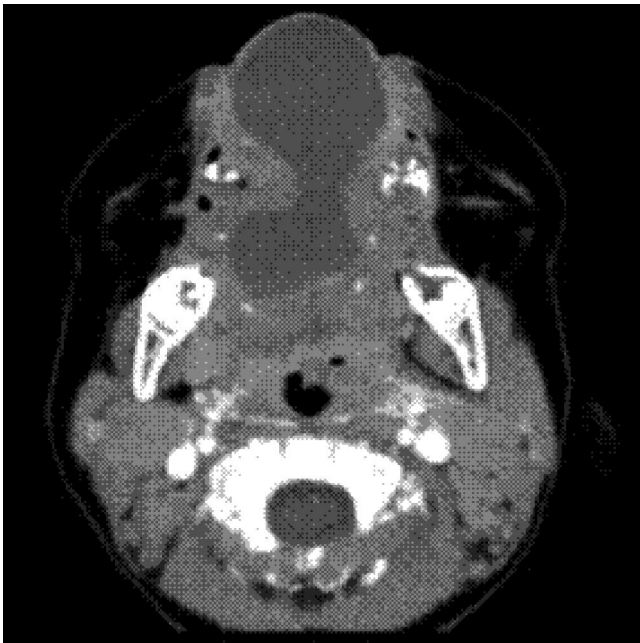


**QUIZ 1**

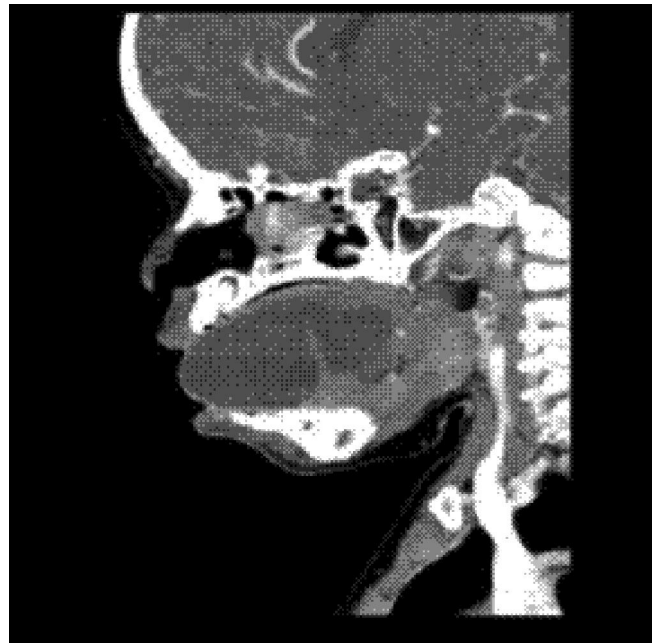
**Submitted by: Muhummad Amin, Shahzad Babar Kureshi**

Advanced Radiology Clinic, Karachi, Pakistan

PJR October - December 2008; 18(4): 134-135



**A**



**B**

**Questions**

- Q.1 What is the abnormality in CT scan?
- Q.2 What are the differentials diagnosis and most likely diagnosis?
- Q.3 Give its brief description?
- Q.4 What are the possible complications?

## QUIZ 1

### Answers

**Answer 1:** Contrast enhanced CT axial/sagittal images shows non-enhancing septated cystic mass involving the anterior 2/3 of the tongue

**Answer 2:** Differential diagnosis include:

- Primitive foregut lingual cyst.
- Dermoid cyst.
- Ranula.
- Cystic hygroma.
- Hemangioma.
- Thyroglossal duct cyst.

Final Diagnosis: Primitive foregut lingual cyst.

**Answer 3:** Foregut (enteric) duplication cysts are classified as choristomas containing heterotopic island of gastrointestinal mucosa. They consist of a cystic wall composed partly of stratified squamous epithelium and partly of gastrointestinal (columnar) epithelium. The enteric duplication cysts occur anywhere from the oral cavity to the rectum. There are only 21 cases reported in literature.

**Answer 4:** When the lesions are large they may cause difficulty in feeding and may also result in airway obstruction. There are reported cases of sudden deaths as well.

### References

1. Som Curtin. Head and Neck imaging 4th ed. 2003 Mosby 1546-8.
2. Debbie Eaton et al. Congenital foregut duplication cysts of the anterior tongue. Arch otolaryngol Head Neck Surg. 2001; **127**: 1484-7.