

QUIZ 2

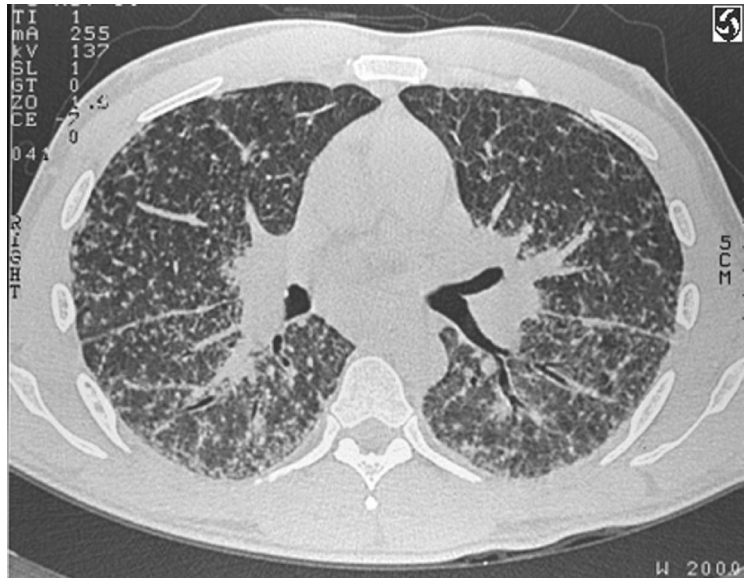
Submitted by: Darakhshan Kanwal, Dawar Burhan Khan

Department of Radiology, Aga Khan University Hospital, Karachi, Pakistan

PJR July - September 2008; 18(3): 102-103

A 35 year old male presented with shortness of breath & weight loss.

IMAGES



Questions

- Q1. What is the abnormality in the chest x-ray and CT scan?
- Q2. What is the most likely diagnosis in this case?
- Q3. What is the plain film classification of this disease involving lungs?
- Q4. What different associations have been described with this disease?

QUIZ 2

Answers

Answer 1: Bilateral hilar lymphadenopathy with multiple small nodules in both lungs.

Answer 2: Sarcoidosis

Answer 3: Stages are:

Stage 0. Normal radiograph

Stage 1. Adenopathy

Stage 2. Adenopathy with pulmonary opacities

Stage 3. Pulmonary opacities without hilar adenopathy

Stage 4. Pulmonary fibrosis usually involving upper lobes.

Answer 4:

1. **Lofgren's syndrome:** acute febrile illness with bilateral hilar adenopathy, erythema nodosum in patient with sarcoid. This has a favorable prognosis.
2. **Heerfordt's syndrome:** occurs between 2nd – 4th decade, self limited condition. Patient presents with parotid gland enlargement, fever, uveitis and cranial nerve palsies.
3. **Lupus pernio:** Violaceous raised skin lesions involving cheeks and nose. Has worst prognosis in all three.

References

1. Takashi Koyama, Hiroyuki Ueda, Kaori Togashi, et al. Radiologic Manifestations of Sarcoidosis in Various Organs: RadioGraphics 2004; **24**: 87-104.
2. K Marten, MD, E J Rummeny, MD and C Engelke, MD: The CT halo: a new sign in active pulmonary sarcoidosis: BJR 2004 ; **77**: 1042-5.